

La grenouille à grande bouche

de Mark Warhol

clarinette en si bémol

INFORMATIONS DE REPRÉSENTATION

On devrait présenter cette musique comme théâtre avec une narratrice ou un narrateur.

ALTÉRATIONS

Selon la convention. Une altération s'applique tout au long de la mesure, pour les notes de la même octave.

LICENCES ET HONORAIRES

droits d'exécution : ASCAP
éditeur : Deaf Smith Publishing
courriel d'éditeur : mw@markwarhol.net

INFORMATIONS DE COMPOSITEUR

web : www.markwarhol.net

Le premier mouvement

Clarinette en si bémol $\text{♩} = 88$ 6

7 *mp*

10

13

16 *f*

19 *crescendo*

22 *ff*

25

28

31 *f*

34

37 *mf*

40

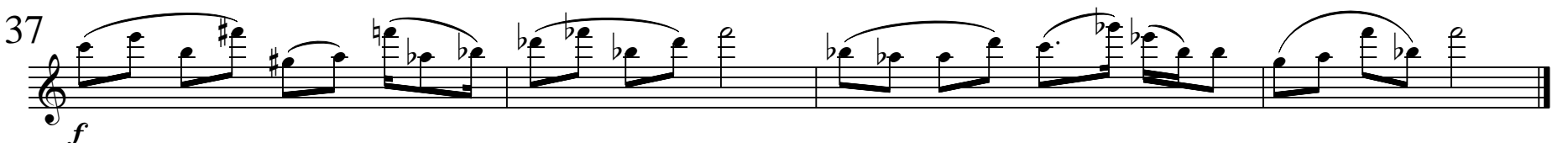
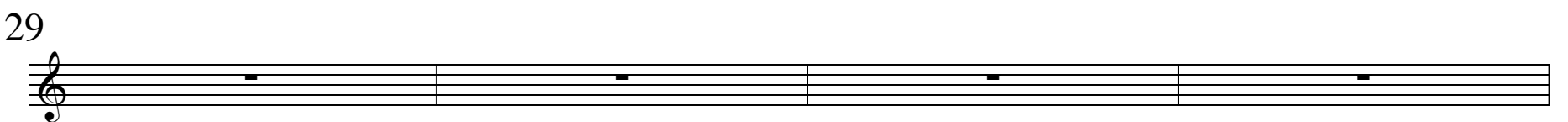
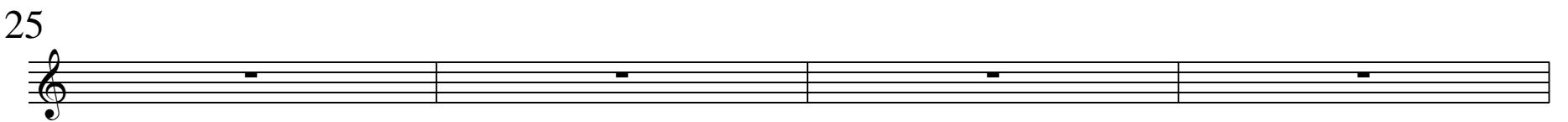
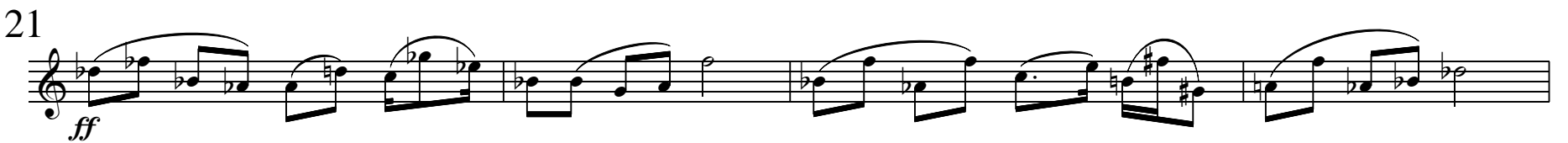
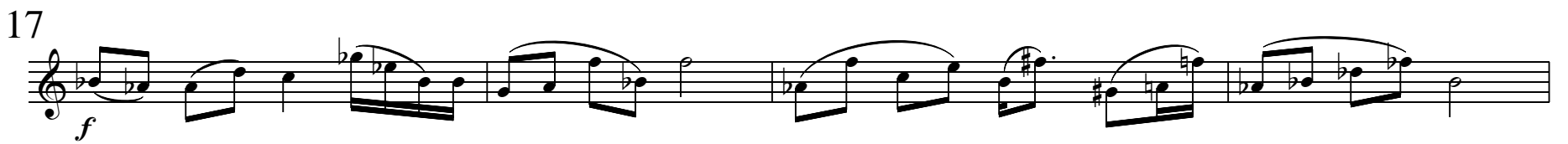
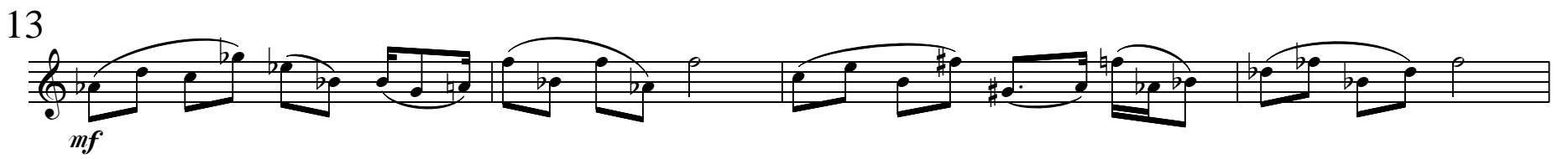
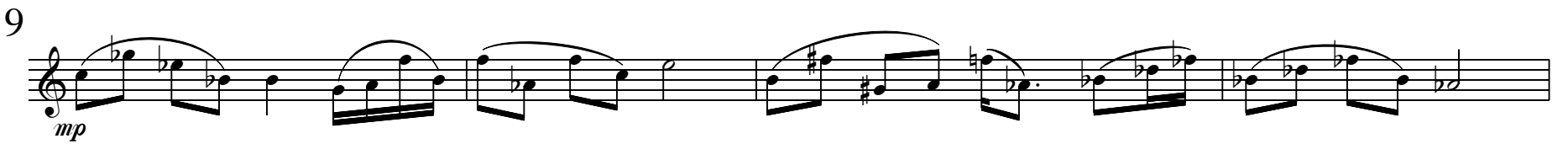
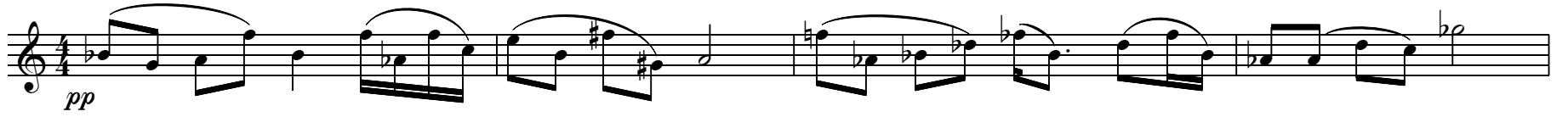
Le deuxième mouvement

♩ = 88

Musical score for 'Le deuxième mouvement'. The score is written in treble clef and consists of 12 staves. The tempo is marked as ♩ = 88. The key signature is one sharp (F#). The time signature is 3/4. The score includes various musical notations such as rests, eighth notes, and triplets. The dynamics range from *mp* (mezzo-piano) to *ff* (fortissimo). The score is divided into measures, with measure numbers 5, 9, 13, 17, 21, 25, 29, 33, 37, 41, 45, and 49 indicated. The score ends with a double bar line at the end of the 12th staff.

Le troisième mouvement

♩ = 88



Le quatrième mouvement

♩ = 176

f

5

9

13

17

p *mp*

21

mp *mf*

25

mf

29

f *f* *diminuendo*

33

mf *diminuendo*

37

mp *diminuendo*

41

p

Detailed description: This musical score is for the fourth movement of a piece, marked with a tempo of 176 beats per minute. It consists of ten staves of music. The first four staves (measures 1-16) are marked *f* and feature a series of eighth-note chords with slurs. The fifth staff (measures 17-20) is marked *p* and *mp*, showing a transition to a more melodic line. The sixth staff (measures 21-24) is marked *mp* and *mf*. The seventh staff (measures 25-28) is marked *mf*. The eighth staff (measures 29-32) is marked *f* and *diminuendo*. The ninth staff (measures 33-36) is marked *mf* and *diminuendo*. The tenth staff (measures 37-40) is marked *mp* and *diminuendo*. The final staff (measures 41-44) is marked *p* and ends with a double bar line.